



*jordan fishwick*

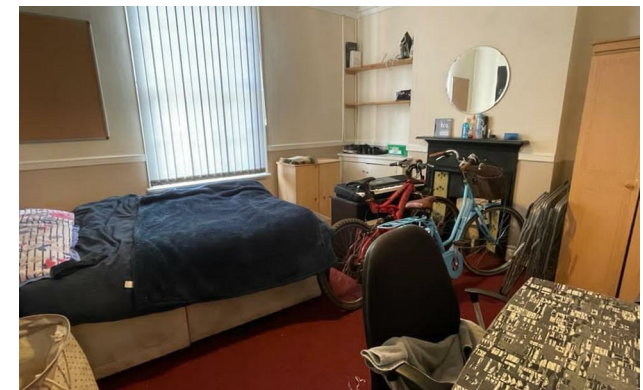
130 Ladybarn Lane, Ladybarn, M14 6RW  
Guide Price £2,254 Per Calendar Month





## Ladybarn Lane Manchester M14 6RW

£2,254 Per Calendar Month



### The Property

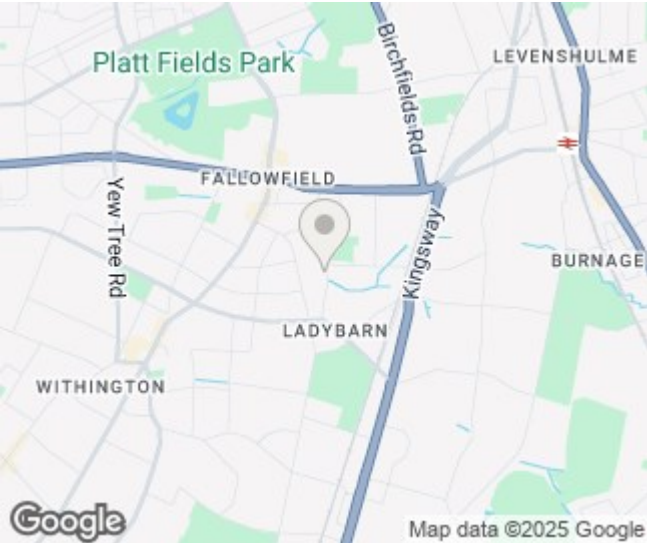
\*\*\* AVAILABLE 1st JULY 2026 \*\*\* £130.00 PPPW \*\*\* BILLS PACKAGE AVAILABLE \*\*\* A larger than average 4 bedroom student home ideally located within walking distance to Wilmslow Road bus routes, Fallowfield centre, bars and restaurants. In brief, comprises; entrance hall, generous double bedroom, spacious lounge and separate stylishly presented kitchen. To the first floor are a further three double bedrooms, and a modern three piece bathroom suite. The property also benefits from a large enclosed garden to the rear. The landlord offers British Gas homcare cover, window cleaning and gardening. Viewings highly recommended! To view please contact our Didsbury office


View our Virtual Tour Here - <https://youtu.be/B0l4iehOwLM>

EPC Rating - D // Council Tax Band B



- Available July 2026
- £130.00 PPPW
- Four Double Bedrooms
- Fully Furnished
- Large Enclosed Garden to Rear
- Bills Package Available
- Great Location
- Council Tax Band B
- EPC Rating D



Energy Efficiency Rating		
	Current	Potential
Very energy efficient - lower running costs		
(92 plus) <b>A</b>		
(81-91) <b>B</b>		<b>87</b>
(69-80) <b>C</b>		
(55-68) <b>D</b>	<b>63</b>	
(39-54) <b>E</b>		
(21-38) <b>F</b>		
(1-20) <b>G</b>		
Not energy efficient - higher running costs		
<b>England &amp; Wales</b>		EU Directive 2002/91/EC 





These particulars are believed to be accurate but they are not guaranteed and do not form a contract. Neither Jordan Fishwick nor the vendor or lessor accept any responsibility in respect of these particulars, which are not intended to be statements or representations of fact and any intending purchaser or lessee must satisfy himself by inspection or otherwise as to the correctness of each of the statements contained in these particulars. Any floorplans on this brochure are for illustrative purposes only and are not necessarily to scale.

Offices at: Chorlton, Didsbury, Disley, Hale, Glossop, Macclesfield, Manchester Deansgate, Manchester Whitworth Street, New Mills, Sale, Wilmslow and Withington